

CleanCare

Solution for Cooling Channel Maintenance

CleanCare is the result of decades of experience in industry and trade, reliable and easy-to-use device for **automated cleaning of water-bearing systems**.

It reliably removes rust, limescale and other deposits from water systems which are only operated with compressed air.

Benefit from a huge increase in performance, comprehensive cost reduction and first-class service.

Benefits:



COMPREHENSIVE CLEANING

Rust, lime and other deposits are removed from your water-bearing systems, tools and machines.



QUALITY AND PERFORMANCE IMPROVEMENT

After cleaning, you will notice a significant difference in the quality, efficiency and performance of your systems.



WEAR AND TEAR AND REPAIR MINIMIZATION

Reduced wear on your machines, less maintenance, minimized production downtime and lower repair costs.



ENERGY COST SAVINGS

You will achieve a significantly lower energy resource consumption with the CleanCare.

Fields of application:

- INJECTION MOULDING MACHINES
- INJECTION MOULDING TOOLS
- TEMPERATURE CONTROL UNITS
- COOLING CIRCUITS



MICROCONTROLLING UNIT
FOR AUTOMATIC RINSING

TOUCHSCREEN DISPLAY
SHOWING OPERATION
VALUES OF THE CLEAN CARE
OPTISYSTEMS 4800 / 7000

CCA-M4500



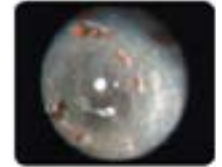
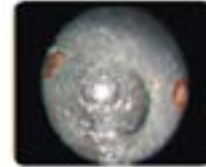
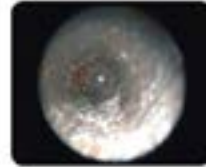
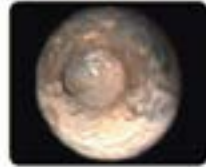
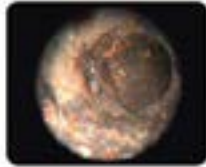
CCA-M7000



CleanCare

Solution for Cooling Channel Maintenance

VERIFIED IMPROVEMENTS IN THE LEVEL OF EFFICIENCY



Before

5 hour operating time

After

BASIC FEATURES

- single rinse of operating cycles
- leakage test of operating cycles
- single operation with compressed air
- low-maintenance and robust membrane pump
- large smooth-running wheels
- large tanks for rinsing / preserving
- extendable hose for flow and return (2x5m)

TECHNOLOGY FEATURES

- USB port for saving the cleaning protocol
- simple to perform software updates
- backlit colour touch display
- direct pH measurement of the rinse water cycle
- direct flow measurement of the rinse water cycle
- display of process data on the touch display
- saves relevant protocol data on a USB stick
- integrated rechargeable batteries for mains-independent operation

SIZE AND WEIGHT

Size: **528** (width) x **1190** (height) x **790** (depth) mm

Weight: approx. **67** kg (empty)

PERFORMANCE CHARACTERISTICS

- max. flow rate: 10 l / min
- feed pressure: approx. 6 bar
- max. drive pressure: 6 bar
- cleaning tank capacity: approx. 115 l
- preservation tank capacity: approx. 18 l
- filter mesh size: 60 - 350 µm

ELECTRICAL CONNECTION

- power supply: 230V/ 50Hz
- power consumption: max. 50 VA

CleanCare	Basic features	Automation	pH-measurement	Flux measurement	Separate preservation tank
CCA-M4500	✓				
CCA-M4800	✓	✓	✓	✓	
CCA-M6000	✓				✓
CCA-M7000	✓	✓	✓	✓	✓

AVAILABLE CHEMICALS

CCA-P0010
high performance descaler
15 l container

CCA-P0020
neutralisator

CCA-P0030
complexing agent and
corrosion protection

CCA-P0050
cleaning agent removes
oil contamination