



**FROM PELLET TO PART**  
YOUR PARTNER  
FOR PRODUCTIVITY  
AND SUSTAINABILITY



## DME SMART SERIES® M2+

# ADVANCED HOT RUNNER TEMPERATURE CONTROL AND PROCESS MONITORING

A fully featured controller platform with advanced capabilities for superior moulding performance. Well suited for tight process control on all co-injection applications, it is your best choice as a direct replacement for many existing outdated controller platforms.

Unlock your operations full potential.

### KEY FEATURES

#### LARGE INTUITIVE TOUCH SCREEN CONTROLS

- Modernized interface
- Quick and easy to use
- Rapid response rates
- Familiar gestures like pinch-to-zoom
- Available in 8", 12" and 17" formats

#### ADVANCED FUNCTIONALITY

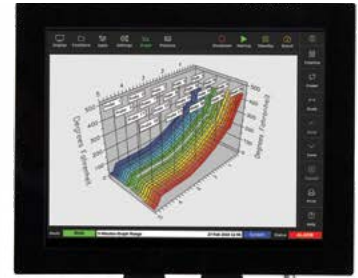
- KORTEC auto cavity balancing
- Auto leak detection
- Auto tool diagnostics
- TC auto slave
- And much more

#### IO ALARM INTERLOCK

- Interface with any injection machine
- Triggers an alarm when issues are identified
- Pauses the moulding process until corrected
- Helps maintain process consistency

#### WIRELESS NETWORK CONTROL (WLAN)

- Multi cell operation
- Multiple IP operation
- Download/Upload tool set-up
- Valuable for clean room applications





FROM PELLET TO PART  
YOUR PARTNER  
FOR PRODUCTIVITY  
AND SUSTAINABILITY



# DME SMART SERIES® M2+

## PRECISE TEMPERATURE CONTROL AND WORLD CLASS FEATURES

### SPECIFICATIONS

<b>User Interface</b>	Full Color LCD Touch Screen
<b>Display Sizes</b>	8" (203mm), 12" (305mm), or 17" (432mm)
<b>Control Algorithm</b>	APS (Adaptive Process System)
<b>Power Control</b>	Phase Angle and Burst Firing Modes (Time Proportional, Zero-Crossing)
<b>Control Accuracy</b>	+/- 0.5°C (1°F)
<b>Display Resolution</b>	0.1 (°C or °F)
<b>Power Response Time</b>	8.3 ms at 60 Hz
<b>Temperature Scale</b>	°C or °F (Software Selectable)
<b>Thermocouple</b>	J or K-Type (Software Selectable)
<b>Operating Range</b>	0- 472°C (32- 882°F)
<b>Output Voltage (Max)</b>	264 VAC
<b>Supply Voltage</b>	200/240V 3P Delta or 380/415V 3P Star with Neutral (480V, 3P with optional transformer)
<b>Frequency</b>	50- 60 Hz Automatic Switching
<b>Ambient Temperature Range</b>	5- 45°C (41- 113°F)
<b>Humidity Range</b>	Up to 95% non-condensing
<b>Ground Fault Detection</b>	40mA per Zone
<b>Alarm Output</b>	Closing Contact Relay 5A, 230V (Max)
<b>T/C Connector</b>	Various Options Available
<b>Power Connector</b>	Various Options Available
<b>Input Protection</b>	63mA Nano Fuses on Both T/C Legs
<b>Overload Protection</b>	Semi-conductor fuses on both heater legs
<b>Heater Fuses</b>	15A @ 220V Fast Blow Type
<b>Control Modes</b>	Closed Loop (Auto), Open Loop (Manual), Standby, Boost, Slave
<b>Ports</b>	USB and Ethernet
<b>LED Indicators</b>	Scan, Fuse, Thermocouple, Failure, Ground Fault, Power%
<b>Communications</b>	SPI, Real VNC, Modbus, OPC-UA
<b>Languages</b>	English, French, German, Portuguese, Spanish, Polish, Russian, Chinese, Japanese, Czech, Italian, Turkish

Cabinet Size	# of Cards (Max)	# of Zones (Max)	Dimensions WxDxH cm (in.)
XS	6	24	31x45x81 (12x18x32)
S	12	48	36x45x96 (14x18x38)
M	24	96	45x60x116 (18x24x46)
L	36	144	45x60x141 (18x24x56)
XL	63	252	56x61x168 (22x24x66)

Based on 4z-15A cards. Increase max zones with 6z-5A cards.

### INCLUDES

- 4.8 m (15') cable set.
- Quick start guide.